



Dear Parents/Carers,

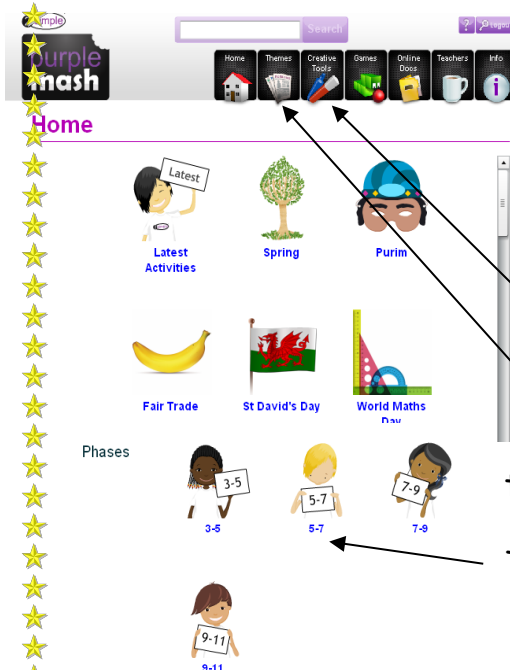
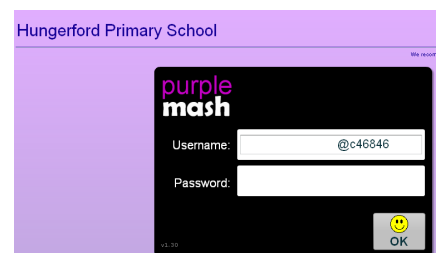
This term school has subscribed to Purple Mash, an exciting and safe online environment where children can get involved in all sorts of creative projects to support their learning in Literacy, Maths, Science, ICT, History, Geography, RE, Art, Music, and Design and Technology.

Your child will be given their Username and Password to access their Purple Mash account from home. Each child has their own personal login, which is unique to them and will enable them to access the different activities Purple Mash has to offer.

There is a link on the school website to access Purple Mash. Complete the login by adding your child's username at the beginning of the details that appear, and their password. They have been given a login card and they need to keep this safe at home as it has their unique details on it. If children need to access their account at school and cannot remember their login, class teachers will have a list of these in school.

You can also access the Purple Mash website using the following address:

<http://www.mashlogin.com/hayfieldlane>



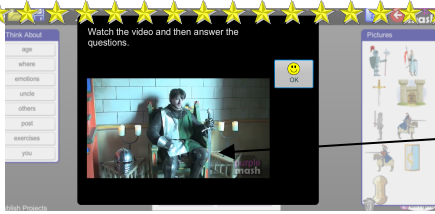
Once logged in they will be able to show you the work they have done in school and explore the activities more themselves.

There are tabs at the top of the page which allow you to search for more specific activities.

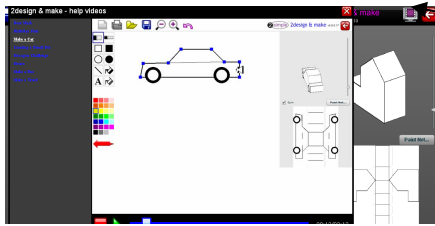
The 'Creative Tools' tab goes to lots of the 2Simple software.

The 'Themes' tab allows you to find activities connected to topics you are learning about in school.

There is also an age-related option at the bottom of the screen.



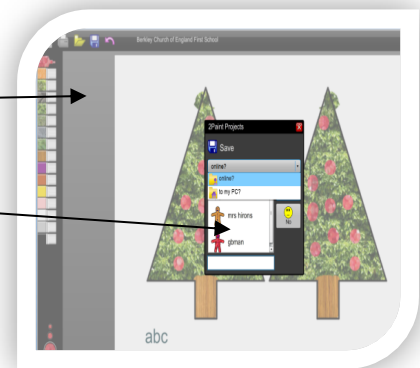
For some activities there are videos for you to watch.



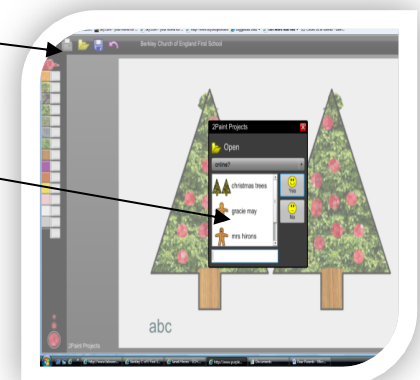
There are instruction videos on all the 2 simple items in the creative tools.

Once your child has completed a piece of work or an activity on Purple Mash they will be able to save what they have done. They can either save to their own pc or use the drop down menu to save online. They will need to give the work a suitable file name. If they save their work online the next time they come into school they can then show the work that they have done at home. From either save option they can access any work to continue at any time. Once saved, the work can be viewed by clicking the online docs tab at the top of the home page.

To save work, click on the save icon at the top of the page and choose where to save.



To open any saved worked click on the yellow folder and choose the file.



All children will have access to Purple Mash in school.

Hopefully this letter gives you an exciting insight into Purple Mash and the ways we hope it can be used both in school and at home. Please feel free to browse the site at your own leisure using your child's login and if you have any questions, queries or problems, please ask.

We hope that you will enjoy using Purple Mash

Mrs L Tempest